



KEY FEATURES

1,777
Square Feet

3
Beds

2.5
Bathrooms

2
Car Garage

The Whimbrel

With its thoughtful layout and multi-level design, this plan adapts beautifully to the needs of families and individuals alike. Highlights of the Whimbrel floor plan include:

- **A private upper-level primary suite** complete with walk-in closet and en-suite bathroom for comfort and privacy.
- **Two additional upstairs bedrooms positioned near a full bath, providing space** for family, guests, or a home office.
- A **versatile loft space** ideal for a second living area, playroom, or work-from-home hub.

With private second story suites and bedrooms, The Whimbrel has room for both relaxation and connection.

Renderings and floor plans are for representational purposes only and may not reflect the exact features or dimensions of your home. All dimensions are subject to field variations. Some design features and options shown may vary by community. All options to be included in your home must be specified in an exhibit to the agreement of sale. Architerra Homes, LLC. reserves the right to modify, amend, or change the representational rendering and plan at any time without notice. Please consult our sales representatives for more information at (208) 719-7107 or visit www.myarchiterra.com Revised 09/2025.



(208) 719-7107
hello@myarchiterra.com
myarchiterra.com

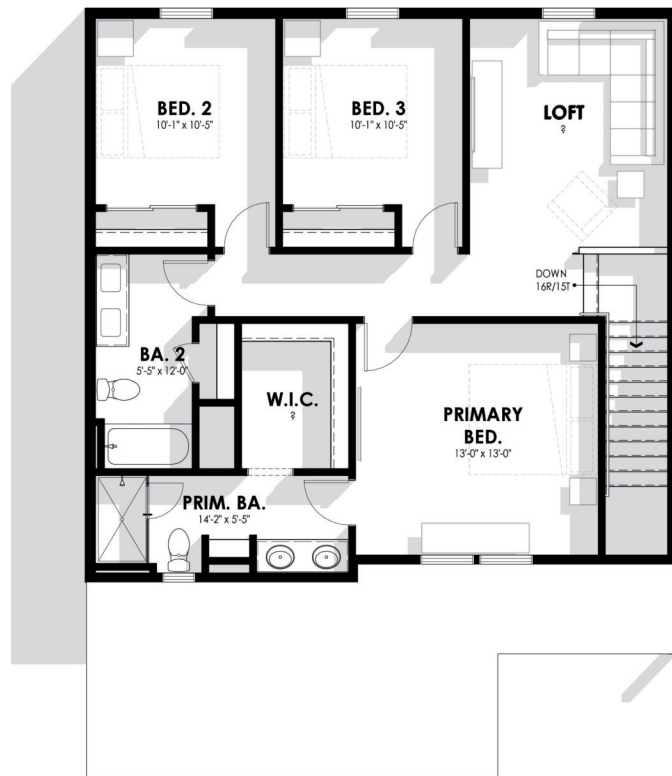
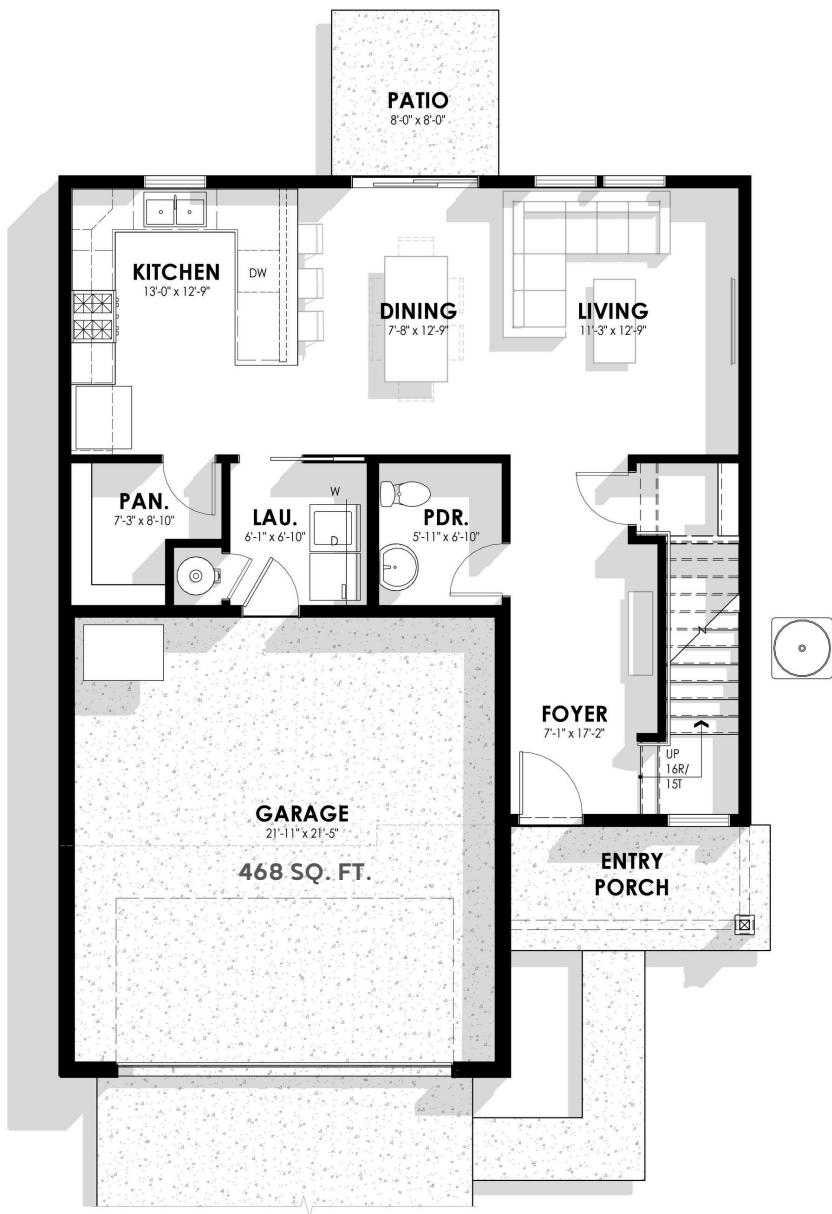


THE WHIMBREL

DEBUT COLLECTION

MAIN LEVEL
813 SQ. FT.

SECOND LEVEL
964 SQ. FT.



Renderings and floor plans are for representational purposes only and may not reflect the exact features or dimensions of your home. All dimensions are subject to field variations. Some design features and options shown may vary by community. All options to be included in your home must be specified in an exhibit to the agreement of sale. Architerra Homes, LLC. reserves the right to modify, amend, or change the representational rendering and plan at any time without notice. Please consult our sales representatives for more information at (208) 719-7107 or visit www.myarchiterra.com Revised 09/2025.



(208) 719-7107
hello@myarchiterra.com
myarchiterra.com