



KEY FEATURES

2,448 Square Feet

4 Beds

3 Bathrooms

3 Car Garage

The Ashford

Welcome to The Ashford, a Signature Collection home where design meets function. With a 4-bedroom layout and an inviting two-car garage, this plan is thoughtfully crafted for modern lifestyles.

- A **gourmet chef's kitchen** offers stainless steel appliances, a spacious island, and a walk-in pantry—perfect for both quick breakfasts and elaborate entertaining.
- The **primary suite** is privately located on the main floor, featuring a luxurious en-suite bathroom and expansive walk-in closet.
- A **flexible fourth bedroom upstairs**, complete with a full bath and walk-in closet, makes an ideal guest suite, home office, or private retreat.

Discover the elegance of Ashford—where thoughtful details meet timeless appeal. Whether you're entertaining, relaxing, or making everyday memories, this plan is designed to elevate your lifestyle.

Renderings and floor plans are for representational purposes only and may not reflect the exact features or dimensions of your home. All dimensions are subject to field variations. Some design features and options shown may vary by community. All options to be included in your home must be specified in an exhibit to the agreement of sale. Architerra Homes, LLC. reserves the right to modify, amend, or change the representational rendering and plan at any time without notice. Please consult our sales representatives for more information at (208) 719-7107 or visit www.myarchiterra.com. Revised 01/2026.

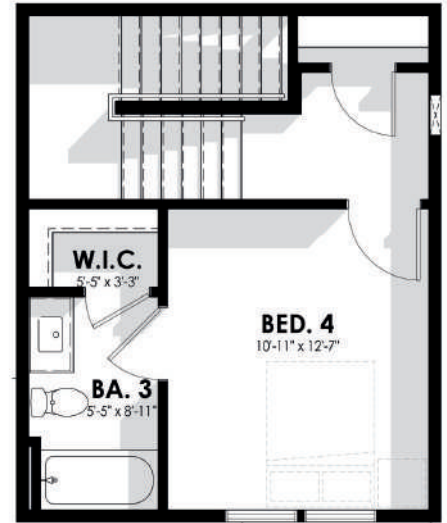


(208) 719-7107  
hello@myarchiterra.com  
myarchiterra.com



MAIN LEVEL  
2,150 SQ. FT.

SECOND LEVEL  
298 SQ. FT.



Renderings and floor plans are for representational purposes only and may not reflect the exact features or dimensions of your home. All dimensions are subject to field variations. Some design features and options shown may vary by community. All options to be included in your home must be specified in an exhibit to the agreement of sale. Architerra Homes, LLC. reserves the right to modify, amend, or change the representational rendering and plan at any time without notice. Please consult our sales representatives for more information at (208) 719-7107 or visit [www.myarchiterra.com](http://www.myarchiterra.com). Revised 01/2026.



(208) 719-7107  
[hello@myarchiterra.com](mailto:hello@myarchiterra.com)  
[myarchiterra.com](http://myarchiterra.com)