



KEY FEATURES

2,582 Square Feet

4

Beds

2.5

Bathrooms

3

Car Garage

The Carlsbad

Designed to delight from the moment you arrive, The Carlsbad promises spacious and stylish living for the lucky new residents. The layout stretches over two levels with soaring 9ft ceilings, an open-concept design, and premium finishes and fixtures throughout.

- For those who love to cook, the kitchen is sure to be the heart of everyday life with an **oversized island**, high-end appliances, sweeping countertops, and plenty of cabinetry.
- This large and **luxurious primary suite** offers a generous closet and a flawless master bath with a double vanity.
- A cozy gas fireplace warms the light-filled family room, with a glass slider providing an **effortless flow out to the backyard and patio.**

Make the exceptional home yours and discover a new lifestyle defined by relaxation and style with a seamless blend of spaciousness and comfort.

Renderings and floor plans are for representational purposes only and may not reflect the exact features or dimensions of your home. All dimensions are subject to field variations. Some design features and options shown may vary by community. All options to be included in your home must be specified in an exhibit to the agreement of sale. Architerra Homes, LLC. reserves the right to modify, amend, or change the representational rendering and plan at any time without notice. Please consult our sales representatives for more information at (208) 719-7107 or visit www.myarchiterra.com Revised 04/05/2024

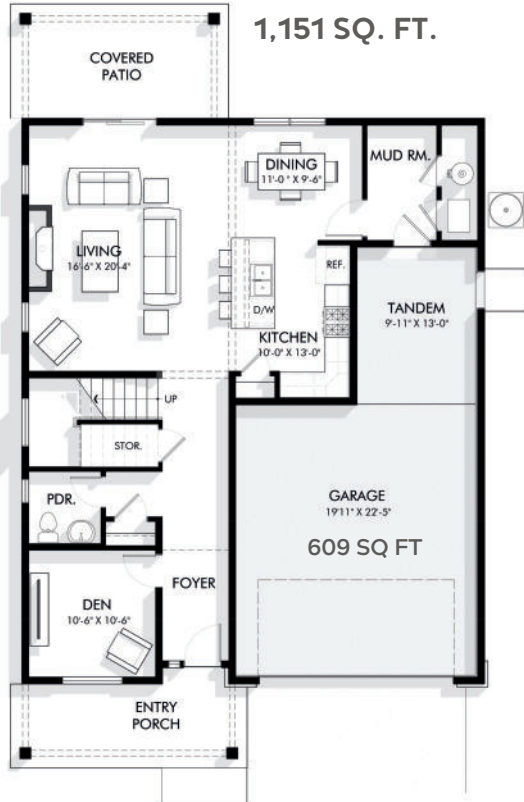




THE CARLSBAD

ICONIC COLLECTION

MAIN LEVEL 1,151 SQ. FT.



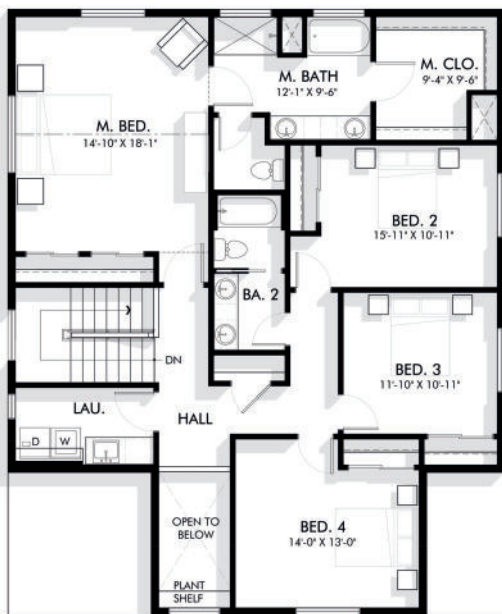
BASEMENT* 1,040 SQ FT



Basement Layout

Main Floor Layout

SECOND LEVEL 1,431 SQ. FT.



3-CAR GARAGE 729 SQ FT



*Only Available for Some Homes

Renderings and floor plans are for representational purposes only and may not reflect the exact features or dimensions of your home. All dimensions are subject to field variations. Some design features and options shown may vary by community. All options to be included in your home must be specified in an exhibit to the agreement of sale. Architerra Homes, LLC. reserves the right to modify, amend, or change the representational rendering and plan at any time without notice. Please consult our sales representatives for more information at (208) 719-7107 or visit www.myarchiterra.com Revised 04/05/2024



(208) 719-7107
hello@myarchiterra.com
myarchiterra.com