



CRAFTSMAN



FARMHOUSE



### KEY FEATURES

**2,430**  
Square Feet

**4**  
Bedrooms  
+ Loft

**3**  
Bathrooms

**2**  
Car  
Garage

## The Phoenix

The Phoenix floor plan features two stories. An inviting front porch welcomes you into an open concept layout filled with natural light and ample space for hosting gatherings.

- The upper floor holds a **private primary suite**, complete with a walk-in closet and a full bathroom featuring Jack and Jill sinks.
- The **loft area** is perfect for working remotely, handling household responsibilities, or catching a quiet moment of relaxation.
- Experience a sense of peace as you enter The Phoenix through its **welcoming front porch**. Ideal for enjoying morning coffees or engaging in friendly conversations with neighbors, this delightful area sets the stage for a warm homecoming.

Experience the ease and efficiency of a well-organized living space, designed to adapt to your ever-changing needs.

Renderings and floor plans are for representational purposes only and may not reflect the exact features or dimensions of your home. All dimensions are subject to field variations. Some design features and options shown may vary by community. All options to be included in your home must be specified in an exhibit to the agreement of sale. Architerra Homes, LLC, reserves the right to modify, amend, or change the representational rendering and plan at any time without notice. Please consult our sales representatives for more information at (208) 719-7107 or visit [www.myarchiterra.com](http://www.myarchiterra.com) Revised 04/05/2024



(208) 719-7107  
[hello@myarchiterra.com](mailto:hello@myarchiterra.com)  
[myarchiterra.com](http://myarchiterra.com)

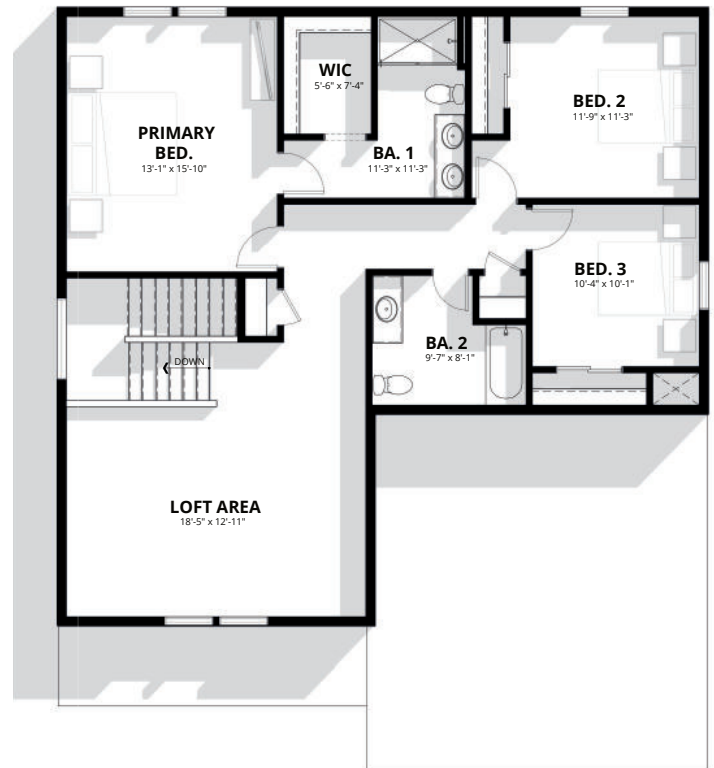
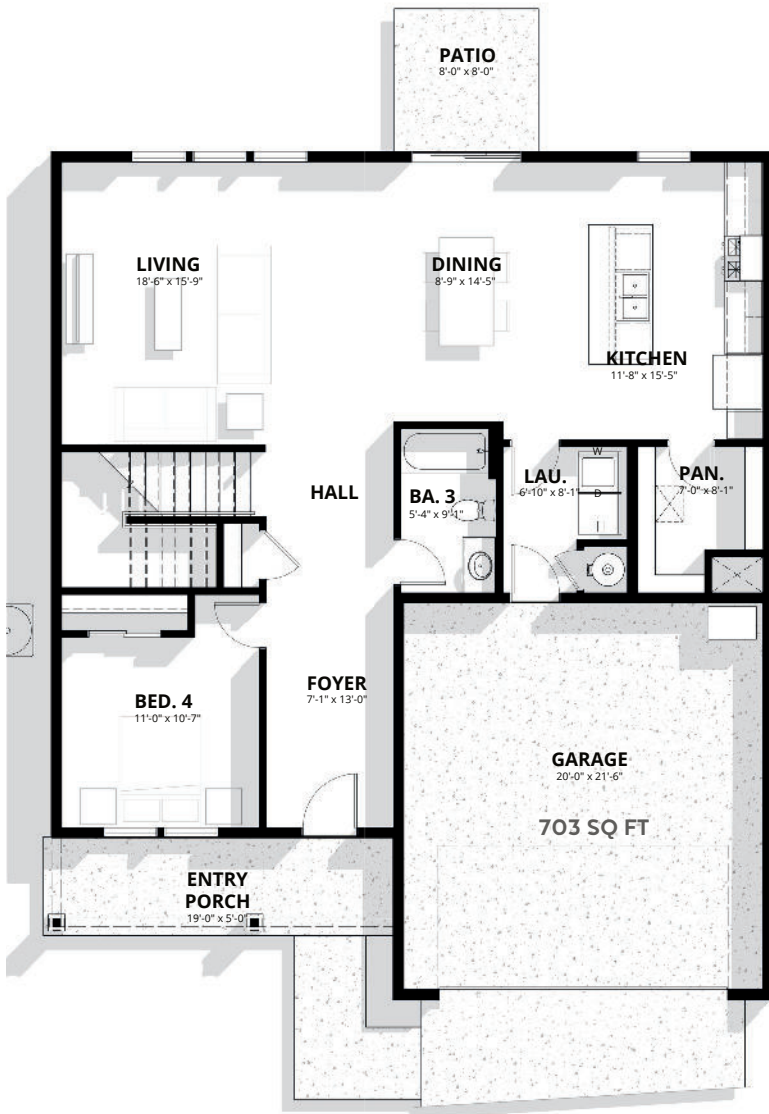


# THE PHOENIX

# DEBUT COLLECTION

**MAIN LEVEL**  
**1,252 SQ. FT.**

**SECOND LEVEL**  
**1,178 SQ. FT.**



Renderings and floor plans are for representational purposes only and may not reflect the exact features or dimensions of your home. All dimensions are subject to field variations. Some design features and options shown may vary by community. All options to be included in your home must be specified in an exhibit to the agreement of sale. Architerra Homes, LLC. reserves the right to modify, amend, or change the representational rendering and plan at any time without notice. Please consult our sales representatives for more information at (208) 719-7107 or visit [www.myarchiterra.com](http://www.myarchiterra.com) Revised 04/05/2024



(208) 719-7107  
[hello@myarchiterra.com](mailto:hello@myarchiterra.com)  
[myarchiterra.com](http://myarchiterra.com)