



KEY FEATURES

2,262 Square Feet

3 Bedrooms

2.5 Bathrooms

2 Car Garage

The Bridger

The Bridger bursts with charm and exudes sleek, timeless elegance, with plenty to love about this sensational home.

- The flawless attention to detail continues into the **gourmet kitchen** with an **oversized island**, premium appliances, and a double-door pantry for the eager cook.
- You can chat with guests as they gather in the dining area or move outside to the back **covered patio** to truly immerse yourself in this life of luxury.
- Quality fixtures throughout, ample storage, and an **attached two-car garage**.

The Bridger blends style with practicality, making it an excellent choice for those looking for a home that's both stunning and functional. Its well-thought-out design, quality amenities, and inviting atmosphere create a comfortable and enjoyable living space for you and your guests.

Renderings and floor plans are for representational purposes only and may not reflect the exact features or dimensions of your home. All dimensions are subject to field variations. Some design features and options shown may vary by community. All options to be included in your home must be specified in an exhibit to the agreement of sale. Architerra Homes, LLC. reserves the right to modify, amend, or change the representational rendering and plan at any time without notice. Please consult our sales representatives for more information at (208) 449-1905 or visit www.myarchiterra.com Revised 06/19/2024



(509) 719-7107
hello@myarchiterra.com
myarchiterra.com



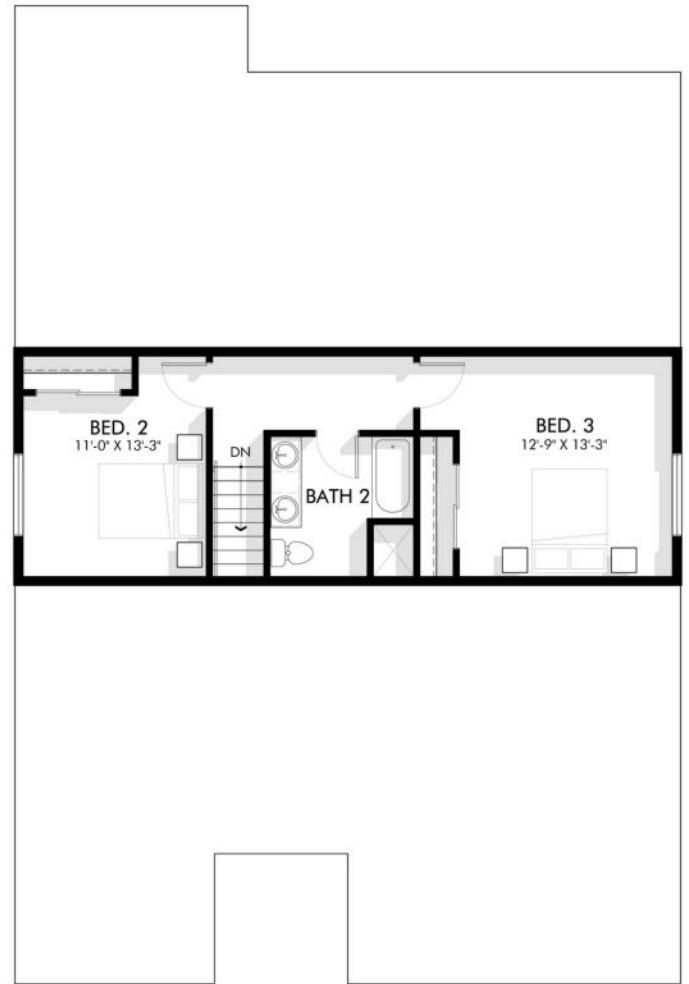
THE BRIDGER

ICONIC COLLECTION

MAIN LEVEL
1,714 SQ. FT.



SECOND LEVEL
548 SQ. FT.



Renderings and floor plans are for representational purposes only and may not reflect the exact features or dimensions of your home. All dimensions are subject to field variations. Some design features and options shown may vary by community. All options to be included in your home must be specified in an exhibit to the agreement of sale. Architerra Homes, LLC. reserves the right to modify, amend, or change the representational rendering and plan at any time without notice. Please consult our sales representatives for more information at (208) 449-1905 or visit www.myarchiterra.com Revised 06/19/2024



(509) 719-7107
hello@myarchiterra.com
myarchiterra.com