

Columbia



3 Beds + Pocket Office



2 Baths



1,703 SQ FT



Tandem 2 Car Garage

The Columbia presents a well-conceived layout with an open-concept living area designed for relaxation and entertainment. Key highlights of the Columbia floor plan include:

- **A secluded primary suite** at the rear of the home offers a serene retreat, with heightened privacy, separate from roommates, house guests, and daily activity.
- **A pocket office** offers an additional space for a range of activities and uses from working to storage.
- **A tandem 2-car garage** provides extra room for additional vehicles, storage, or garage workspace.
- **An outdoor patio** create an inviting outdoor living space, ready for kids, pets, or private relaxation the day you move-in.

The Columbia is a streamlined home providing flexibility for roommates, small families, or couples who can make the most of its well-organized design.

Top Features

- Energy Star Certified
- Full A/C
- ERV (Energy Recovery Ventilator)
- Vaulted Ceilings
- Covered Front Porch
- 8' Front Door
- Luxury Laminate Plank in Main Living Areas
- Premium Vinyl Windows
- Keyless Front Entry
- Video Doorbell

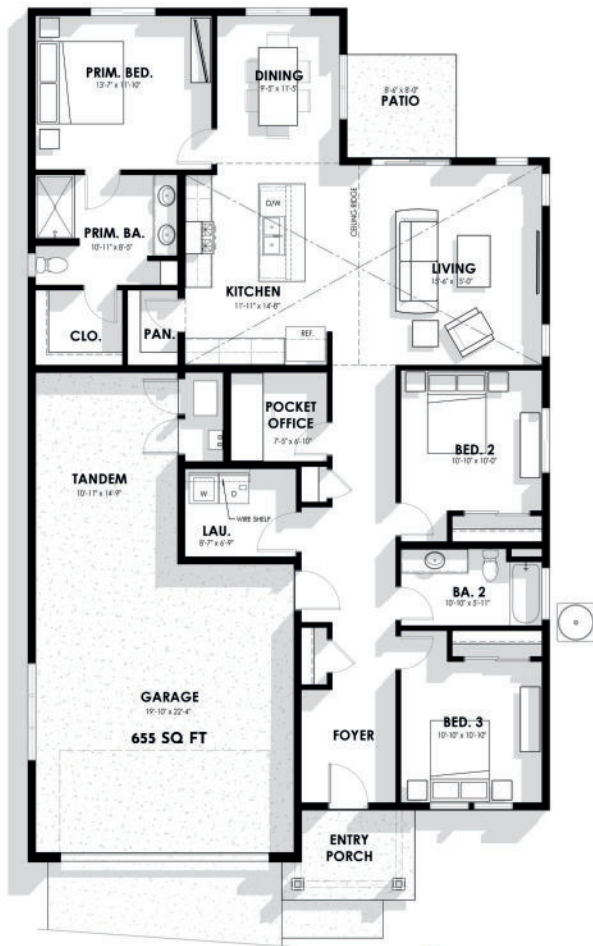


ARCHITERRA
myarchiterra.com

Renderings and floor plans are for representational purposes only and may not reflect the exact features or dimensions of your home. All dimensions are subject to field variations. Some design features and options shown may vary by community. All options to be included in your home must be specified in an exhibit to the agreement of sale. Architerra Homes, LLC. reserves the right to modify, amend, or change the representational rendering and plan at any time without notice. Please consult our sales representatives for more information at (208) 449-1905 or visit www.myarchiterra.com

The Columbia

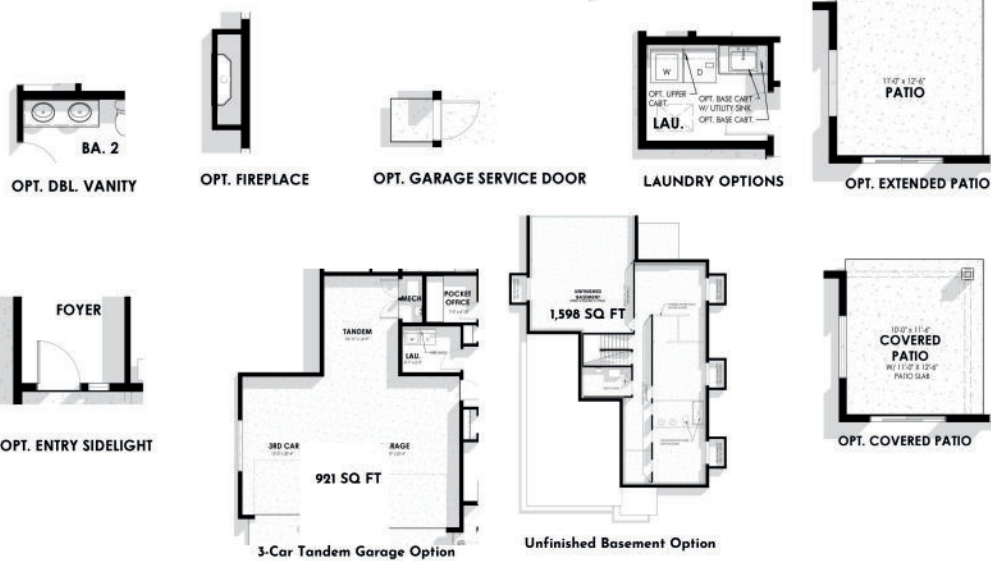
Main Floor



Elevations



Structural Options



Renderings and floor plans are for representational purposes only and may not reflect the exact features or dimensions of your home. All dimensions are subject to field variations. Some design features and options shown may vary by community. All options to be included in your home must be specified in an exhibit to the agreement of sale. Architerra Homes, LLC reserves the right to modify, amend, or change the representational rendering and plan at any time without notice. Please consult our sales representatives for more information at (208) 449-1905 or visit www.myarchiterra.com
Revised 11/1/2023

