

# The Katmai



3 Beds



2 Full + 1 Half



2,121 SQ FT



2 Car Garage

Bring your new home dreams to life with this perfectly designed home. Comfortable elegance is on display throughout, starting with the open and bright great room, complete with a vaulted ceiling and gas fireplace.

This single-story floor plan features the following:

- **A spacious owner's suite** with a large walk-in closet and private bath featuring solid surface counters, double sinks, tiled, a walk-in shower, and a toilet closet.
- **Gourmet kitchen** with solid surface counters, stainless, gas appliances, full height backsplash, large island, and pantry.
- **Dedicated office** for work-from-home ease!

Every inch of the Katmai is designed and built with your enjoyment in mind!

## *Top Features*

- 9' Ceilings
- Granite or Quartz Countertops
- Full A/C
- Fully Fenced Rear Yard
- 36" Gas Fireplace
- Full Height Kitchen Backsplash
- 8' Front & Interior Doors
- Luxury Vinyl Plank Flooring in Living Room, Dining, Laundry, Halls, & Bathrooms

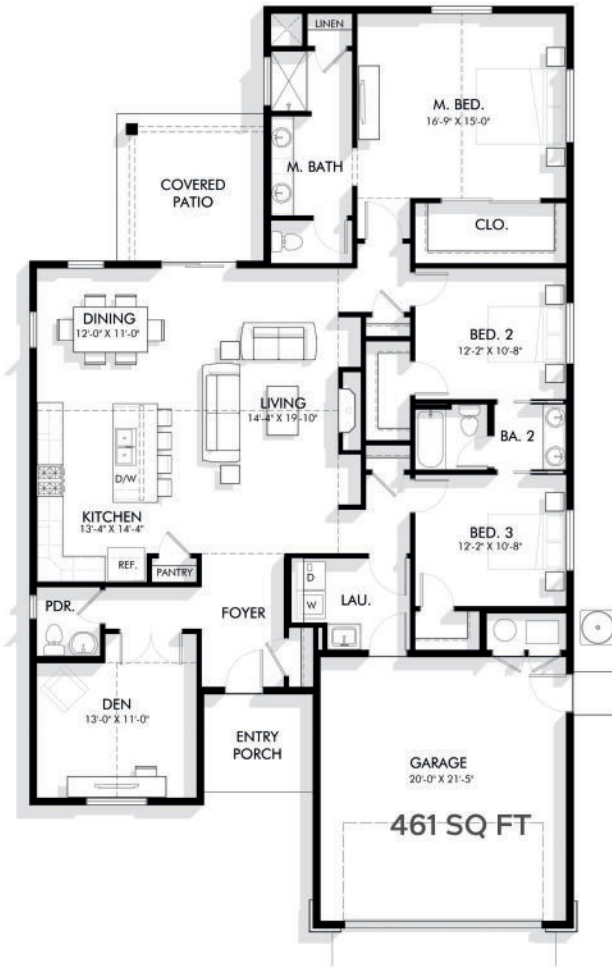


**ARCHITERRA**  
myarchiterra.com

Renderings and floor plans are for representational purposes only and may not reflect the exact features or dimensions of your home. All dimensions are subject to field variations. Some design features and options shown may vary by community. All options to be included in your home must be specified in an exhibit to the agreement of sale. Architerra Homes, LLC. reserves the right to modify, amend, or change the representational rendering and plan at any time without notice. Please consult our sales representatives for more information at (208) 449-1905 or visit [www.myarchiterra.com](http://www.myarchiterra.com)

# Floor Plan The Katmai

**Main Floor** 2,121 SQ FT



**Garage Extension\***

575 SQ FT



**Basement\***  
1,978 SQ FT



Renderings and floor plans are for representational purposes only and may not reflect the exact features or dimensions of your home. All dimensions are subject to field variations. Some design features and options shown may vary by community. All options to be included in your home must be specified in an exhibit to the agreement of sale. Architera Homes, LLC reserves the right to modify, amend, or change the representational rendering and plan at any time without notice. Please consult our sales representatives for more information at (208) 448-1906 or visit [www.myarchiterra.com](http://www.myarchiterra.com).  
Revised 12/31/2023

