

The Hudson



3 Beds



3 Full + 1 Half Bath



2,969 SQ FT



3 Car Garage

The Hudson is a stunning two-story home that exudes warmth and style throughout its classic design. The open concept living and dining rooms lead into a beautiful designer appointed kitchen that features solid surface countertops, a full tile backsplash, and a large walk-in pantry.

- **A cozy den**, perfect for curling up with a good book or watching your favorite movie
- **First-floor primary suite** that includes a serene retreat designed with your comfort in mind. Enjoy the spacious walk-in closet and the stylish accent wall. The bathroom is equipped with high-end features such as a solid surface backsplash, a beautiful solid surface countertop, a rejuvenating stand-alone tub, his-and-hers sinks, a luxurious walk-in shower, a private toilet closet, and sleek tiled floors.
- **Two upstairs bedrooms that have their own ensuite bathroom** with walk-in, tiled showers, making it the perfect home for a small family or a couple who loves to host guests.

The three-car garage provides ample storage space for all your outdoor toys and activities. Two covered porches and a covered courtyard offer easy access to the outdoors, the Enclave Park, and a relaxing private space where you can sip a coffee or simply enjoy nature!

Renderings and floor plans are for representational purposes only and may not reflect the exact features or dimensions of your home. All dimensions are subject to field variations. Some design features and options shown may vary by community. All options to be included in your home must be specified in an exhibit to the agreement of sale. Architerra Homes, LLC. reserves the right to modify, amend, or change the representational rendering and plan at any time without notice. Please consult our sales representatives for more information at (208) 449-1905 or visit www.myarchiterra.com

Top Design Features

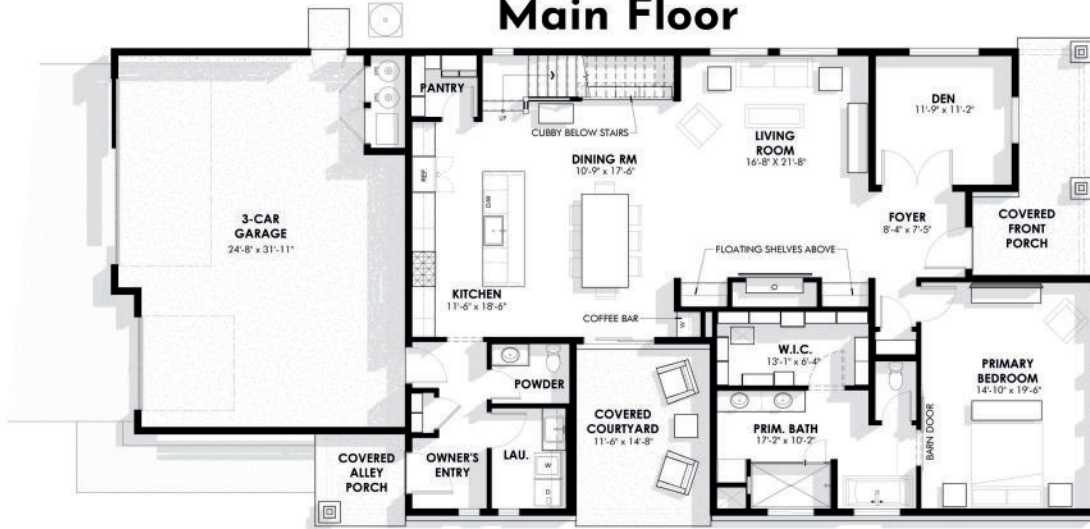
- 10' Ceilings
- 8' Doors
- Open Floor Plan
- Covered Patio
- 3-Car Garage
- 11" Plank Floors
- Solid Surface Countertops
- Full Tile Kitchen Back Splash
- Walk-In Butler Pantry
- Wolf Gas Range
- Sub-Zero Refrigerator



ARCHITERRA
myarchiterra.com

The Hudson

Main Floor



Upper Floor



Elevations



ENERGY STAR
CERTIFIED



HERS
RATED



THIRD PARTY
INSPECTED

Renderings and floor plans are for representational purposes only and may not reflect the exact features or dimensions of your home. All dimensions are subject to field variations. Some design features and options shown may vary by community. All options to be included in your home must be specified in an exhibit to the agreement of sale. Architerra Homes, LLC reserves the right to modify, amend, or change the representational rendering and plan at any time without notice. Please consult our sales representatives for more information at (208) 449-1905 or visit www.mjarchiterra.com



ARCHITERRA