

# The Halston



5 Beds



5 Full + 1 Half Bath



3,144 SQ FT



3 Car Garage

Designed for grand and stylish living, the Halston offers everything you could need in a beautifully designed home that gives every family member their own private space. This fully loaded floor plan offers:

- **Two laundry rooms**, one on each floor
- **A drop zone and guest bathroom just off the garage entry** to capture belongings and keep chaos at bay
- **A first floor primary suite just off the covered patio** featuring a large primary bath, spacious walk-in closet and an accent wall. The en suite bathroom includes a tiled walk-in shower, his-and-hers sinks, stand-alone tub, a toilet closet, and tiled floors.
- **Four additional bedrooms, all with their own, private ensuite bathrooms** featuring walk-in tiled showers.

An open concept kitchen/living/dining area with high-end appliances and walk-in pantry, plus a three car garage and a two covered patio top off this spectacular home!

## *Top Design Features*

- 10' Ceilings
- 8' Doors
- Open Floor Plan
- Covered Patio
- 3-Car Garage
- 11" Plank Floors
- Solid Surface Countertops
- Full Tile Kitchen Back Splash
- Walk-In Butler Pantry
- Wolf Gas Range
- Sub-Zero Refrigerator



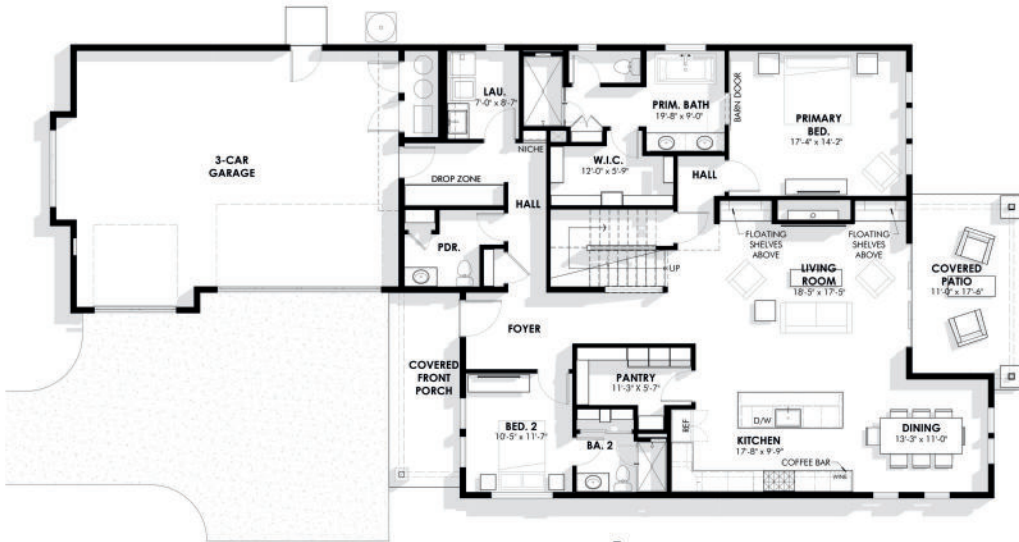
**ARCHITERRA**  
myarchiterra.com

Renderings and floor plans are for representational purposes only and may not reflect the exact features or dimensions of your home. All dimensions are subject to field variations. Some design features and options shown may vary by community. All options to be included in your home must be specified in an exhibit to the agreement of sale. Architerra Homes, LLC. reserves the right to modify, amend, or change the representational rendering and plan at any time without notice. Please consult our sales representatives for more information at (208) 449-1905 or visit [www.myarchiterra.com](http://www.myarchiterra.com)



# The Halston

## Main Floor



## Upper Floor



## Elevations



ENERGY STAR  
CERTIFIED



HERS  
RATED



THIRD PARTY  
INSPECTED

Renderings and floor plans are for representational purposes only and may not reflect the exact features or dimensions of your home. All dimensions are subject to field variations. Some design features and options shown may vary by community. All options to be included in your home must be specified in an exhibit to the agreement of sale. Architerra Homes, LLC reserves the right to modify, amend, or change the representational rendering and plan at any time without notice. Please consult our sales representatives for more information at (208) 449-1905 or visit [www.majorchterra.com](http://www.majorchterra.com)



ARCHITERRA