

The Griffin



3 Beds



2 Full + 1 Half Bath



2,158 SQ FT



3 Car Garage

The Griffin is a single-story rambler offering big perks in a manageable footprint. The top features of this home include:

- **Effortless, single story living**
- **110 feet of extra garage space** for a small workshop, additional storage, or more toys
- **Large primary suite** with a spacious bedroom, complete with an accent wall, and a stunning bathroom with his and hers sinks, solid surface countertops, a stand-alone tub, and a tiled walk-in shower.
- **Two additional bedrooms** with **jack-and-jill bathroom** between
- **Guest powder and laundry conveniently** located across from the bedrooms

Anchoring the home is a high-end gourmet kitchen and coffee bar, equipped with a top-of-the-line Wolf stove and Sub-Zero refrigerator, solid surface countertops, a full tile backsplash, and a walk-in pantry.

Multiple covered porches allow you to enjoy the outdoors in comfort and style, while the 3-car garage provides ample storage space for all your outdoor toys and activities. Don't miss out on the opportunity to make this dream home yours!

Top Design Features

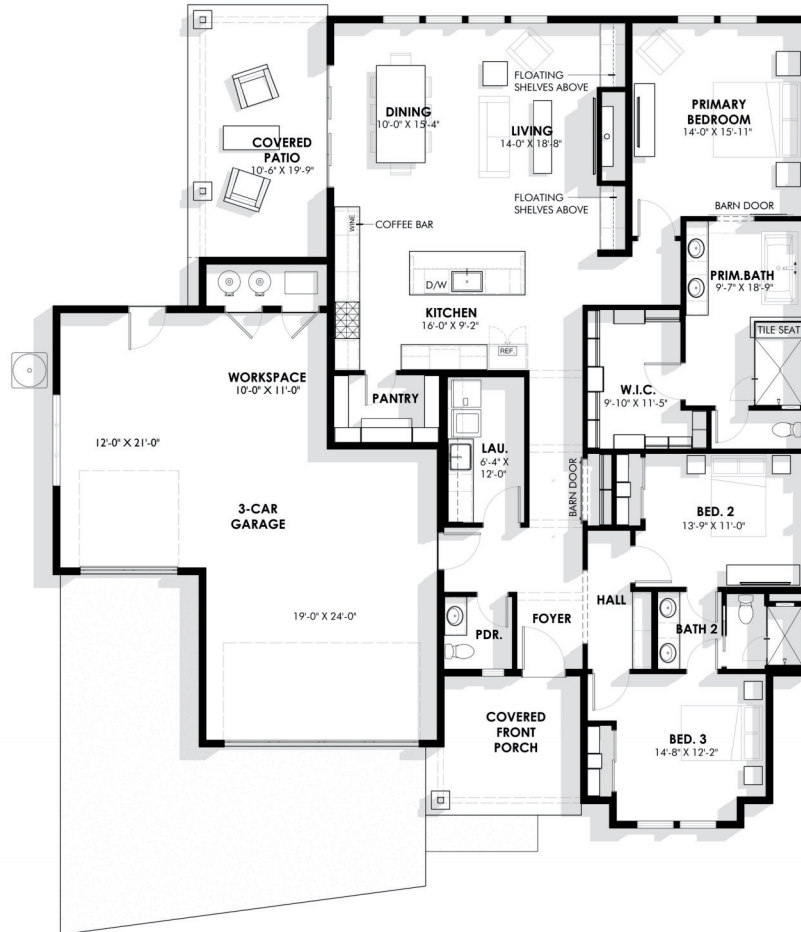
- 10' Ceilings
- 8' Doors
- Open Floor Plan
- Covered Patio
- 3-Car Garage
- 11" Plank Floors
- Solid Surface Countertops
- Full Tile Kitchen Back Splash
- Walk-In Butler Pantry
- Wolf Gas Range
- Sub-Zero Refrigerator



ARCHITERRA
myarchiterra.com

The Griffin

Main Floor



Elevations



ENERGY STAR
CERTIFIED



HERS
RATED



THIRD PARTY
INSPECTED

Renderings and floor plans are for representational purposes only and may not reflect the exact features or dimensions of your home. All dimensions are subject to field variations. Some design features and options shown may vary by community. All options to be included in your home must be specified in an exhibit to the agreement of sale. Architerra Homes, LLC. reserves the right to modify, amend, or change the representational rendering and plan at any time without notice. Please consult our sales representatives for more information at (208) 449-1905 or visit www.myarchiterra.com



ARCHITERRA